



APARTMENT 18, MASTER WILLIAMS PLACE FOLKESTONE, CT20 1FF

£895 PER MONTH

Welcome to this modern apartment located in the desirable Master William's Place, Folkestone. This new build property, completed in 2025, offers a comfortable living space with one reception room and one bedroom, making it an ideal choice for individuals or couples seeking a new home.

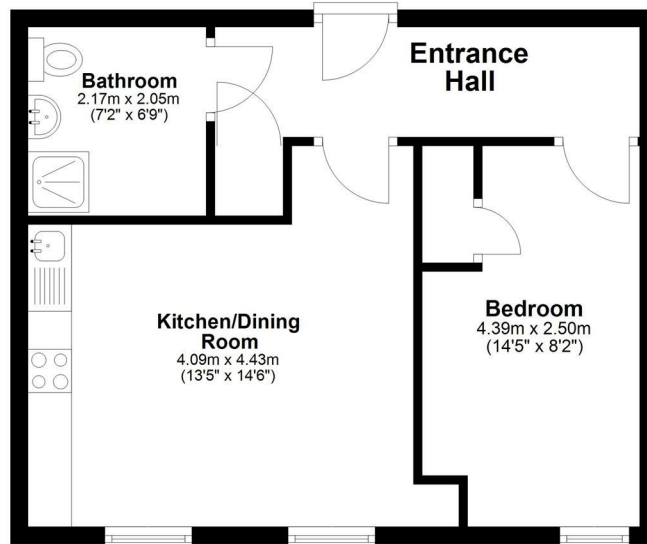
The kitchen is fitted with high-quality Bosch appliances, ensuring that you have reliable and efficient tools for all your cooking needs. This modern touch adds both convenience and style to the space, making it a pleasure to prepare meals.

For those who rely on fast internet connectivity, this building is equipped with Folkestone's first ever 10Gb/s Lease Line, providing the opportunity for super-fast Wi-Fi access. This is particularly beneficial for remote workers or anyone who enjoys streaming and online gaming without interruptions.

**WEST END
ESTATES**
LETTINGS AND PROPERTY MANAGEMENT

Ground Floor

Approx. 40.5 sq. metres (435.7 sq. feet)



Total area: approx. 40.5 sq. metres (435.7 sq. feet)

Whilst every attempt has been made to ensure the accuracy of the floorplan contained here, measurements of doors, windows, rooms and any other items are approximate and no responsibility is taken for any error, omission or mis-statement. This plan is for illustrative purposes only and should be used as such by any prospective purchaser. The services, systems and appliances shown have not been tested and no guarantee as to their operability or efficiency can be given.
Plan produced using PlanUp.



Energy Efficiency Rating		
	Current	Potential
Very energy efficient - lower running costs		
(92 plus) A	81	
(81-91) B		
(69-90) C		
(55-68) D		
(39-54) E		
(21-38) F		
(1-20) G		
Not energy efficient - higher running costs		
England & Wales		EU Directive 2002/91/EC

EPC Rating: B **Council Tax Band: A**

Agents Note: Whilst every care has been taken to prepare these particulars, they are for guidance purposes only. All measurements are approximate and are for general guidance purposes only and whilst every care has been taken to ensure their accuracy, they should not be relied upon and potential buyers/tenants are advised to recheck the measurements

West End Estates Folkestone
7 Sapper Row
Folkestone
Kent
CT20 3WT

01303 478777
office@westend-estates.co.uk

**WEST END
ESTATES**
LETTINGS AND PROPERTY MANAGEMENT